

Go to www.vtechphones.com to register your product for enhanced warranty support and latest VTech product news.

LS6105
LS6105-13
LS6105-15
LS6105-16
LS6105-17

DECT 6.0 accessory handset
for use with
VTech model LS6185



vttech®

User's manual

Congratulations

on purchasing your new VTech product. Before using this telephone, please read **Important safety instructions**.

This manual has instructions on how to set up and register your new handset. For instructions on using the handset, see the Abridged user's manual that came with your telephone base.

You may also view or download the online user's manual for a full set of installation and operation instructions at www.vtechphones.com. In Canada, visit www.vtechcanada.com.



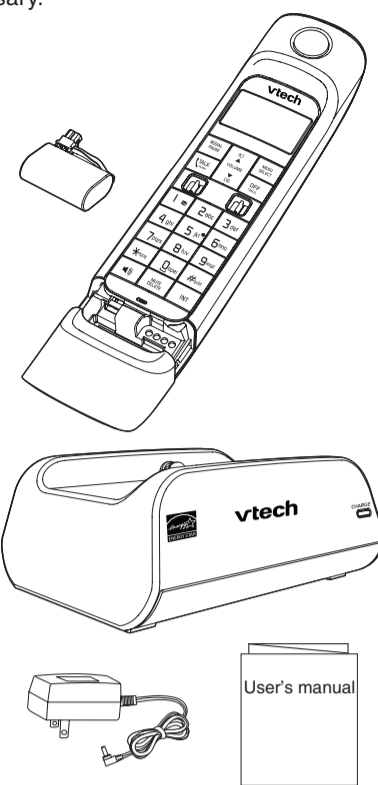
Telephones identified with this logo have reduced noise and interference when used with most T-coil equipped hearing aids and cochlear implants. The TIA-1083 Compliant Logo is a trademark of the Telecommunications Industry Association. Used under license.



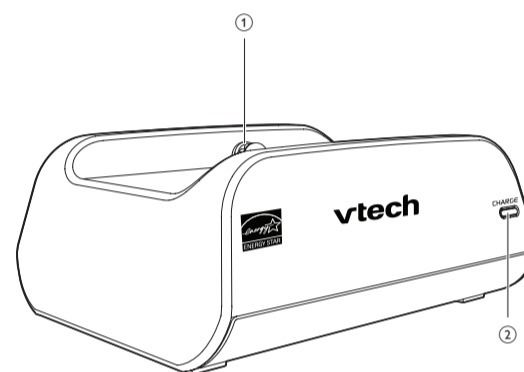
The ENERGY STAR® program (www.energystar.gov) recognizes and encourages the use of products that save energy and help protect our environment. We are proud to mark this product with the ENERGY STAR® label indicating it meets the latest energy efficiency guidelines.

Parts checklist

Your telephone package contains the following items. Save your sales receipt and original packaging in the event warranty service is necessary.

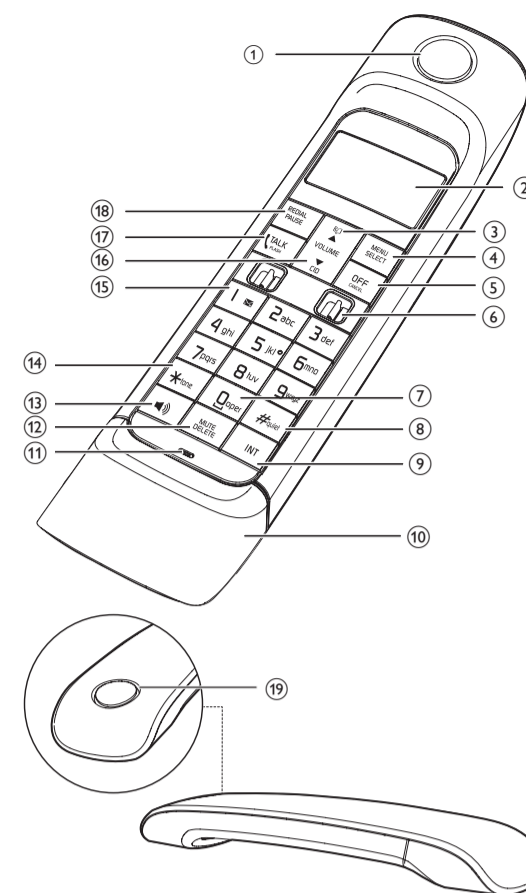


Charger overview



- 1 – Charging pole
2 – CHARGE light

Handset overview



- 1 – Handset earpiece

- 2 – LCD display

- 3 – **RT** / **▲** / VOLUME

- Review the directory when the phone is not in use.
- Scroll up while in a menu, or in the directory, caller ID log or redial list.
- Move the cursor to the right when entering numbers or names.
- Increase the listening volume during a call or message playback.

- 4 – MENU/SELECT

- Show the menu.
- While in a menu, press to select an item or save an entry or setting.

- 5 – OFF/CANCEL

- Hang up a call.
- Return to the previous menu or idle mode without making changes.

- Delete digits while predialing.
- Silence the handset ringer temporarily while the phone is ringing.
- Erase the missed call indicator while the handset is not in use.

- 6 – Charging pole

- 7 – **OPER**

- Enter space character during text editing.

- 8 – **#**quiet

- Show other dialing options when reviewing a caller ID log entry.
- Set and turn on the quiet mode, or turn it off.

- 9 – INT

- Start an intercom conversation or transfer a call.

- 10 – Battery compartment cover

- 11 – Microphone

- 12 – MUTE/DELETE

- Mute the microphone during a call.
- Silence the handset ringer temporarily while the phone is ringing.
- Delete the displayed entry while reviewing the directory, caller ID log or redial list.
- Delete digits while predialing.

- 13 – **CALL**

- Make or answer a call using the handset speakerphone.
- Switch between the speakerphone and the handset earpiece.

- 14 – **XT**tone

- Switch to tone dialing temporarily during a call.

- 15 – **1** **✉**

- Press repeatedly to add or remove 1 in front of the caller ID log entry before dialing or saving it to the directory.
- Set or dial your voicemail number.

- 16 – CID/▼/VOLUME

- Review the caller ID log when the phone is not in use.
- Scroll down while in a menu, or in the directory, caller ID log or redial list.
- Move the cursor to the left when entering numbers or names.
- Decrease the listening volume during a call or message playback.

- 17 – **TALK**

- Make or answer a call.
- Answer an incoming call when you hear a call waiting alert.

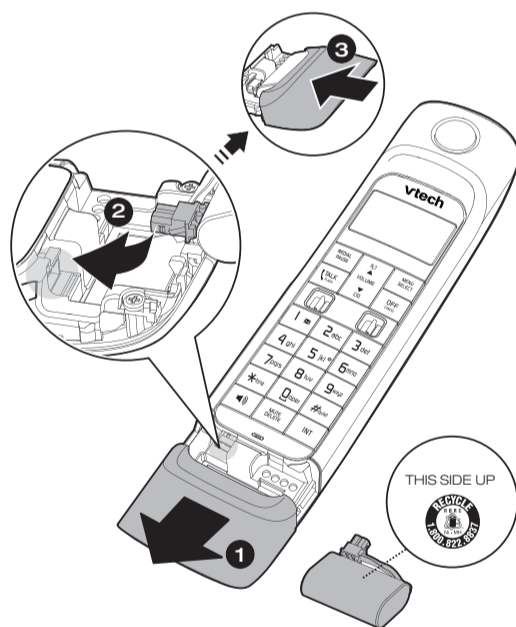
- 18 – REDIAL/PAUSE

- Review the redial list.
- Insert a dialing pause.

- 19 – Handset speakerphone

Display icons overview

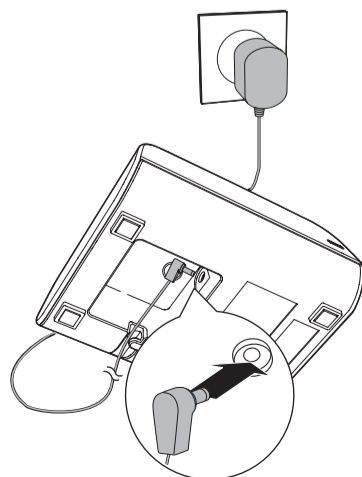
	The battery icon flashes when the battery is low and needs charging.
	The battery icon animates when the battery is charging.
	The battery icon becomes solid when the battery is fully charged.
ECO	The ECO mode activates automatically to reduce power consumption when the handset is within range from the telephone base.
	There are new voicemail received from your telephone service provider.
NEW	There are new caller ID log entries.
ANS ON	The answering system is turned on.
	The handset ringer is off.
	The message number currently playing and total number of new/old messages recorded.



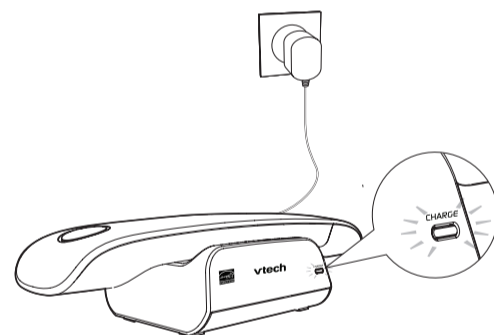
Connect and charge the battery

- note**
- Use only the adaptor provided.
 - Charge the battery provided with or identified for use with this product only in accordance with the instructions and limitations specified in this manual.

Connect the charger



Charge the battery



Once you have installed the battery, the handset LCD display indicates the battery status (see the table below).

- note**
- For best performance, keep the handset in the telephone base or charger when not in use.
 - The battery is fully charged after 11 hours of continuous charging.

Battery indicators	Battery status	Action
The screen is blank, or displays Put in charger and flashes.	The battery has no or very little charge. The handset cannot be used.	Charge without interruption (at least 30 minutes).
The screen displays Low battery and flashes.	The battery has enough charge to be used for a short time.	Charge without interruption (about 30 minutes).
The screen displays HANDSET X .	The battery is charged.	To keep the battery charged, place it in the telephone base or charger when not in use.

Before use

Add and register a handset

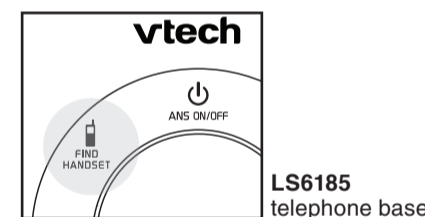
You can add new **LS6105** handsets (purchased separately) to your **LS6185** telephone system. Your **LS6185** telephone system supports a maximum of five handsets.

Register each handset with the **LS6185** telephone base before use. After charged, each expansion handset alternately displays **To register HS...** and **...see manual**.

- note**
- Charge the new handset without interruption for at least 30 minutes before registering it to the telephone base.

To register a handset:

- Press and hold **FIND HANDSET** at the telephone base for about four seconds until the **IN USE** light turns on.



- Press **#**quiet on the cordless handset. Then it shows **Registering...**

The cordless handset show **Registered** and you hear a beep when the registration process completes. The registration process takes about 60 seconds to complete.

Deregister handsets

To replace a handset or reassign the designated handset number of a registered handset, you must deregister all handsets, and then register each handset individually.

To deregister all handsets:

- Press and hold **FIND HANDSET** at the telephone base for about 10 seconds until the **IN USE** light flashes.
- Immediately press **FIND HANDSET** again. You hear a confirmation tone.

All handsets alternately show **To register HS...** and **...see manual** when the deregistration process completes. The deregistration process takes about 10 seconds to complete.

Operating range

This cordless telephone operates with the maximum power allowed by the Federal Communications Commission (FCC). Even so, this handset and telephone base can communicate over only a certain distance - which can vary with the locations of the telephone base and handset, the weather, and the layout of your home or office.

When the handset is out of range, the handset displays **Out of range** or **no pwr at base**.

If there is a call while the handset is out of range, it may not ring. Even if it rings, the call may not connect well when you press **TALK**. Move closer to the telephone base, then press **TALK** to answer the call.

If the handset moves out of range during a telephone conversation, there may be interference. To improve reception, move closer to the telephone base.

ECO mode

This power conserving technology reduces power consumption for optimal battery performance. The ECO mode activates automatically whenever the handset is synchronized with the telephone base.

General product care

Taking care of your telephone

Your cordless telephone contains sophisticated electronic parts, so it must be treated with care.

Avoid rough treatment

Place the handset down gently. Save the original packing materials to protect your telephone if you ever need to ship it.

Avoid water

Your telephone can be damaged if it gets wet. Do not use the handset outdoors in the rain, or handle it with wet hands. Do not install the telephone base near a sink, bathtub or shower.

Electrical storms

Electrical storms can sometimes cause power surges harmful to electronic equipment. For your own safety, take caution when using electrical appliances during storms.

Cleaning your telephone

Your telephone has a durable plastic casing that should retain its luster for many years. Clean it only with a dry non-abrasive cloth. Do not use dampened cloth or cleaning solvents of any kind.

Important safety instructions

When using your telephone equipment, basic safety precautions should always be followed to reduce the risk of fire, electric shock and injury, including the following:

- Read and understand all instructions.
- Follow all warnings and instructions marked on the product.
- Unplug this product from the wall outlet before cleaning. Do not use liquid or aerosol cleaners. Use a damp cloth for cleaning.
- Do not use this product near water such as near a bath tub, wash bowl, kitchen sink, laundry tub or a swimming pool, or in a wet basement or shower.
- Do not place this product on an unstable table, shelf, stand or other unstable surfaces.
- Slots and openings in the back or bottom of the telephone base and handset are provided for ventilation. To protect them from overheating, these openings must not be blocked by placing the product on a soft surface such as a bed,

sofa or rug. This product should never be placed near or over a radiator or heat register. This product should not be placed in any area where proper ventilation is not provided.

- This product should be operated only from the type of power source indicated on the marking label. If you are not sure of the type of power supply in your home or office, consult your dealer or local power company.
- Do not allow anything to rest on the power cord. Do not install this product where the cord may be walked on.
- Never push objects of any kind into this product through the slots in the telephone base or handset because they may touch dangerous voltage points or create a short circuit. Never spill liquid of any kind on the product.
- To reduce the risk of electric shock, do not disassemble this product, but take it to an authorized service facility. Opening or removing parts of the telephone base or handset other than specified access doors may expose you to dangerous voltages or other risks. Incorrect reassembly can cause electric shock when the product is subsequently used.
- Do not overload wall outlets and extension cords.
- Unplug this product from the wall outlet and refer servicing to an authorized service facility under the following conditions:
 - When the power supply cord or plug is damaged or frayed.
 - If liquid has been spilled onto the product.
 - If the product has been exposed to rain or water.
 - If the product does not operate normally by following the operating instructions. Adjust only those controls that are covered by the operation instructions. Improper adjustment of other controls may result in damage and often requires extensive work by an authorized technician to restore the product to normal operation.
 - If the product has been dropped and the telephone base and/or handset has been damaged.
 - If the product exhibits a distinct change in performance.
- Avoid using a telephone (other than cordless) during an electrical storm. There is a remote risk of electric shock from lightning.
- Do not use the telephone to report a gas leak in the vicinity of the leak. Under certain circumstances, a spark may be created when the adapter is plugged into the power outlet, or when the handset is replaced in its cradle. This is a common event associated with the closing of any electrical circuit. The user should not plug the phone into a power outlet, and should not put a charged handset into the cradle, if the phone is located in an environment containing concentrations of flammable or flame-supporting gases, unless there is adequate ventilation. A spark in such

